



*Providing High Quality Water and Sewer
Services at Responsible Rates Since 1960*

CEDAR RIVER WATER & SEWER DISTRICT

STANDARD SPECIFICATIONS FOR INSTALLATION OF DOUBLE CHECK VALVE ASSEMBLY (DCVA), UP TO 2”

**STANDARD SPECIFICATIONS PER CEDAR RIVER WATER & SEWER
PREMISES-ISOLATION CROSS CONNECTION CONTROL PROGRAM**

Installation Requirements

1. The DCVA must be on the State-approved list and must be installed in compliance with the District's Premise Isolation Cross Connection Control Policy (please see drawing for reference).
2. The state of Washington has adopted the University of Southern California's (USC) 10th edition Approved Backflow Device list as its approved list. A link can be found on the District's website at www.CRWSD.com
3. The DCVA installation must be inspected by District staff. Please call between 7:30 AM & 3:00 PM Monday-Friday to schedule an appointment.
4. Upon installation the DCVA must be tested. If the water meter is locked for required installation, coordinate lock removal with District staff to accommodate test. Initial testing and annual testing thereafter is the responsibility of the property owner.
5. The DCVA must be installed 2 to 5 feet from the water meter, prior to any tap or branch.
6. No pipes or sprinkler heads are allowed within a 5 foot radius of the water meter box.
7. It is the responsibility of the property owner to maintain established grade adjacent to the water meter.
8. The DCVA must be installed with the check valves in a horizontal configuration (please see drawing) with the test cocks facing upward.
9. All test cocks must be plugged or capped to reduce the risk of ground water from being siphoned through a leaking test cock.
10. The DCVA must be installed to provide a minimum of 6 inches and a maximum of 10 inches clearance below the top of the box.
11. The DCVA must be installed to provide 6 inches minimum clearance between the inside edge of the box and the test cocks.
12. Sufficient drainage must be provided under the assembly to prevent ponding water.
13. Compressed air fittings must be installed downstream of the DCVA.
14. Unions must be installed on both sides of the device to facilitate removal.

Certified Backflow Assembly Testers (BATs)

A link to State-approved BATs can be found on our website at www.crwsd.com

The list is provided merely for the convenience of the water service customers. Cedar River Water & Sewer District makes no representation regarding the skill or quality of service of the testers listed. Furthermore, Cedar River Water & Sewer District does not assume or accept any liabilities for the actions or performance of such testers. Customers are required to use their own judgement with respect to contracting with these or any other testers. The District, however, recommends that you ask potential testers the following questions:

- 1.) Is the tester currently certified?
- 2.) Can the tester repair the device if it fails the test?
- 3.) Does the tester have a business license and insurance?
- 4.) Will the tester submit results to the District on your behalf?

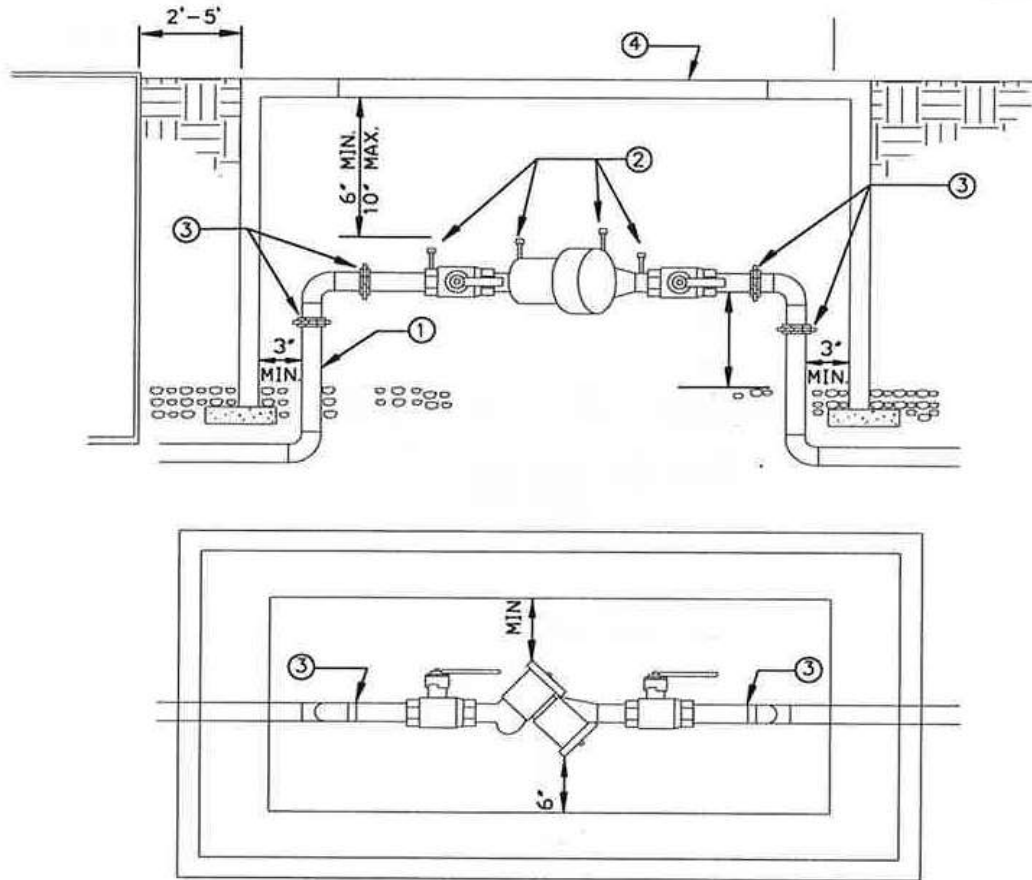
The State requires the test results to be on file at the District office. Please fax, email, hand deliver or mail a copy of the completed test results to Cedar River Water & Sewer District, as soon as possible after the testing of the backflow assembly device. Annual testing is due May 31st. Testing upon initial installation is due the day of the test.

Our address:
Cedar River Water & Sewer District
P.O. Box 1040
Maple Valley, WA 98038-1040
Office: (425)255-6370
Fax: (425)228-4880
Email: backflow@crwsd.com

Before you contact a BAT to test your device, be prepared to provide the following information:

- 1) Device manufacturer such as: Conbraco, Febco, Watts, Wilkens, etc.
- 2) Model number such as: 805Y, 950XL, 007M2PCQt, 40-108-A2T, etc.
- 3) Device location with any instructions should access be limited.

The information above should be attached to the device.



- DCVA-BOX SHALL BE LOCATED IMMEDIATELY DOWNSTREAM OF WATER METER BOX PRIOR TO ANY BRANCH CONNECTIONS, WITH NO MORE THAN 2'-5' BETWEEN BOXES.
- DCVA MUST BE PURCHASED AND INSTALLED AS A UNIT. NO MODIFICATIONS TO ANY PART OF THE ASSEMBLY ARE ALLOWED.
- FREEZE PROTECTION IS THE RESPONSIBILITY OF THE OWNER AND SHALL NOT INTERFERE WITH OPERATION OR TESTING OF THE ASSEMBLY.

Notes:

1. PIPING FROM SERVICE LINE TO DCVA MUST BE COPPER OR BRASS.
2. TEST COCKS MUST BE POINTED UP AND PLUGGED OR CAPPED.
3. UNIONS MUST BE INSTALL VERTICALLY OR HORIZONTALLY TO ACCOMMODATE REMOVAL.
4. DCVA MUST BE INSTALLED BELOW GROUND WITH LID ADJUSTED TO FINISH GRADE AND IN A BOX LARGE ENOUGH TO ACCOMMODATE BACKFLOW INSTALLATION AS ILLUSTRATED.

DOUBLE CHECK VALVE ASSEMBLY (3/4" – 2" ASSEMBLIES)